

Ranch

Cottage

Cape Cod

Traditional

Vacation

Estate

The Magnolia



3 Bedrooms, 2.5 Baths
2,071 1st Floor, 1,200 2nd Floor,
3,271 Living Area, 255 Porch
41'7" x 68' Dimensions

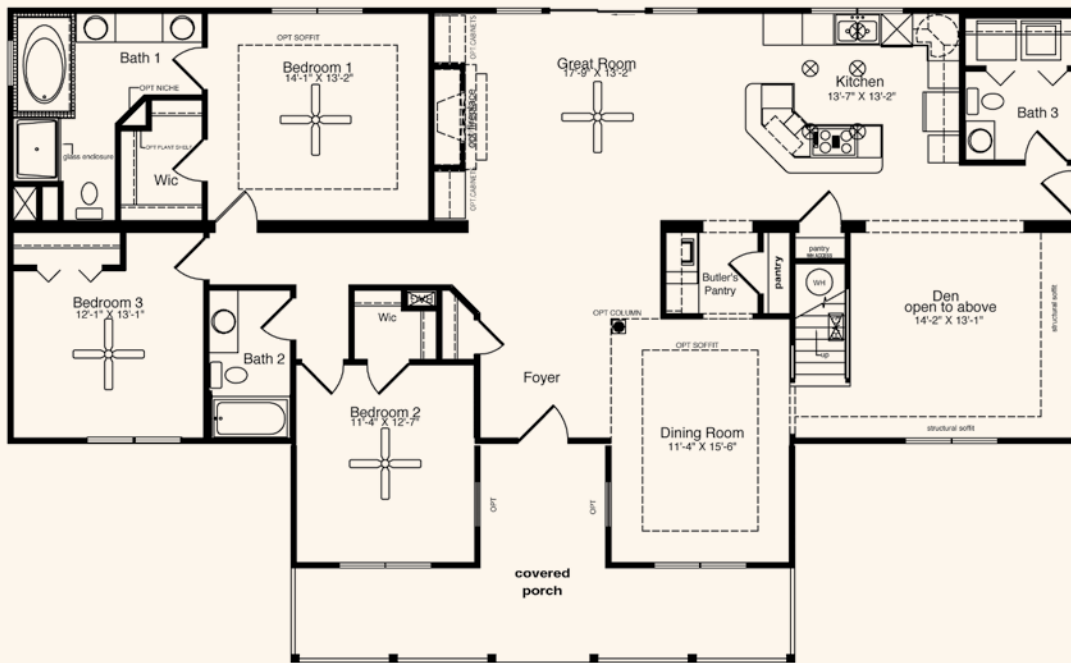
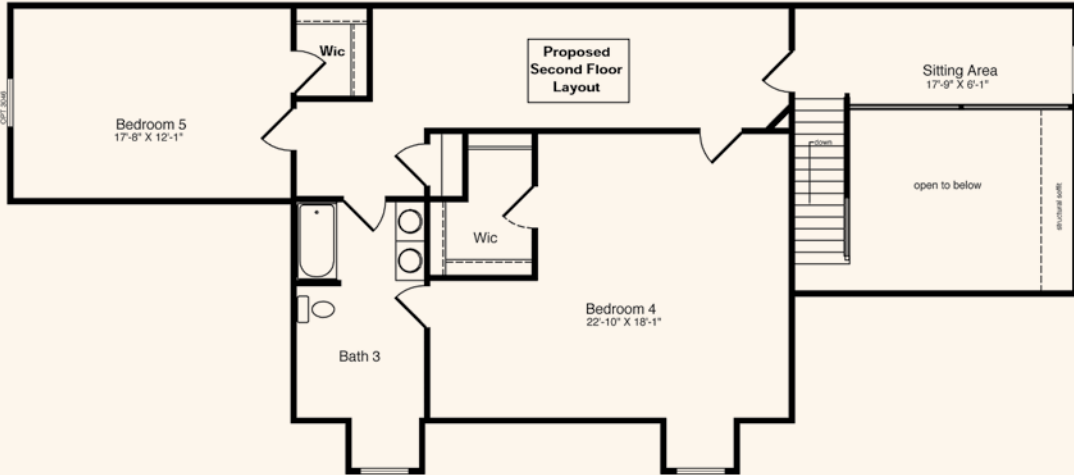


This majestic home built by HandCrafted Homes offers you over 3,200 square feet of living space. The front entrance, with its built-in porch, welcomes you into the living area. The island kitchen, separate butler's pantry and formal dining room allow for the perfect home for entertaining. This home has bonus space galore and a very unique feature in the den – a vaulted ceiling complete with balcony. The curb appeal this home offers is just the beginning.

*Top elevation shown with 3 optional 4' dormers, sidelites at front door. Lower elevation shows optional transom above front door.

HandCrafted Homes

101 Eastern Minerals Rd., Henderson, NC 27537 • 877-424-4321 • 252-436-0001 • HandCraftedHomes.com



All home elevations are artist renderings and may vary from actual construction. All floor plans and room sizes are approximate. All information contained is the sole property of HandCrafted Homes.

The Magnolia

HandCrafted Homes

101 Eastern Minerals Rd., Henderson, NC 27537 • 877-424-4321 • 252-436-0001 • HandCraftedHomes.com