

Ranch

Cottage

Cape Cod

Traditional

Vacation

Estate

The Mayberry



3 Bedrooms, 3.5 Baths
1,549 1st Floor, 1,205 2nd Floor,
2,754 Living Area
27'8" x 56' Dimensions



With 2,754 square feet of living space, this home offers an open-to-above foyer, kitchen with large island and the master suite on the first level. Two additional bedrooms, each with its own bath, are located on the second floor. The classic lines of the home's exterior invite guests into a warm and welcoming interior. The functionality of The Mayberry makes it a design that will be sure to complete your dreams.

*Both elevations shown with optional center 8' dormer with true radius window and shutters, sidelites at front door. Top elevation shown with elliptical transom above front door, on-site constructed porch and on-site installed metal roof.

HandCrafted Homes

101 Eastern Minerals Rd., Henderson, NC 27537 • 877-424-4321 • 252-436-0001 • HandCraftedHomes.com

Ranch

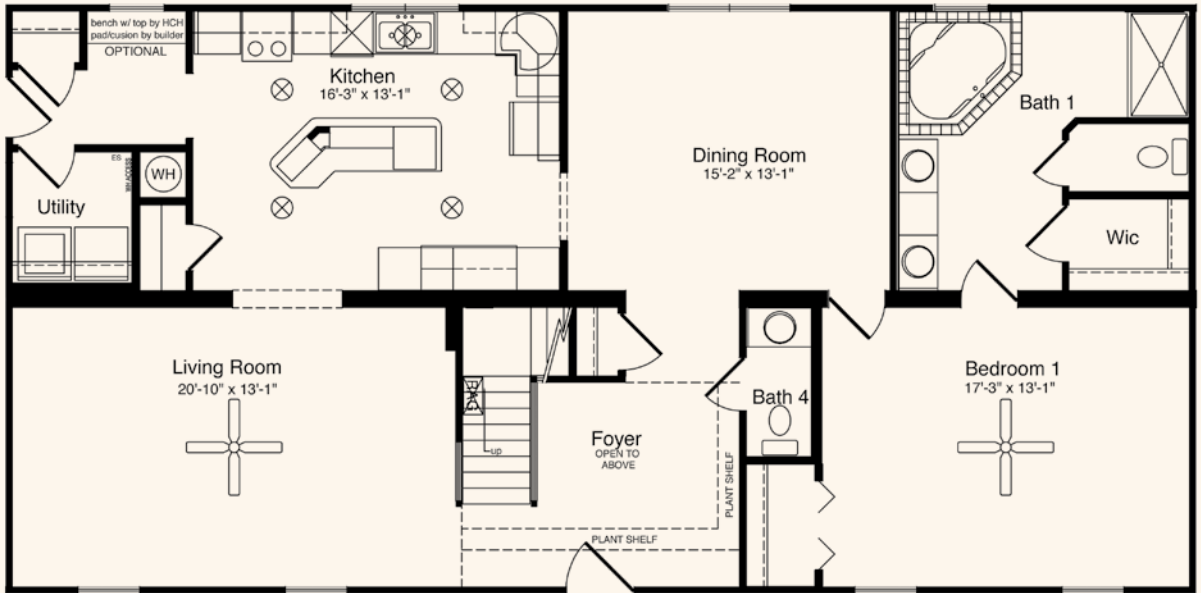
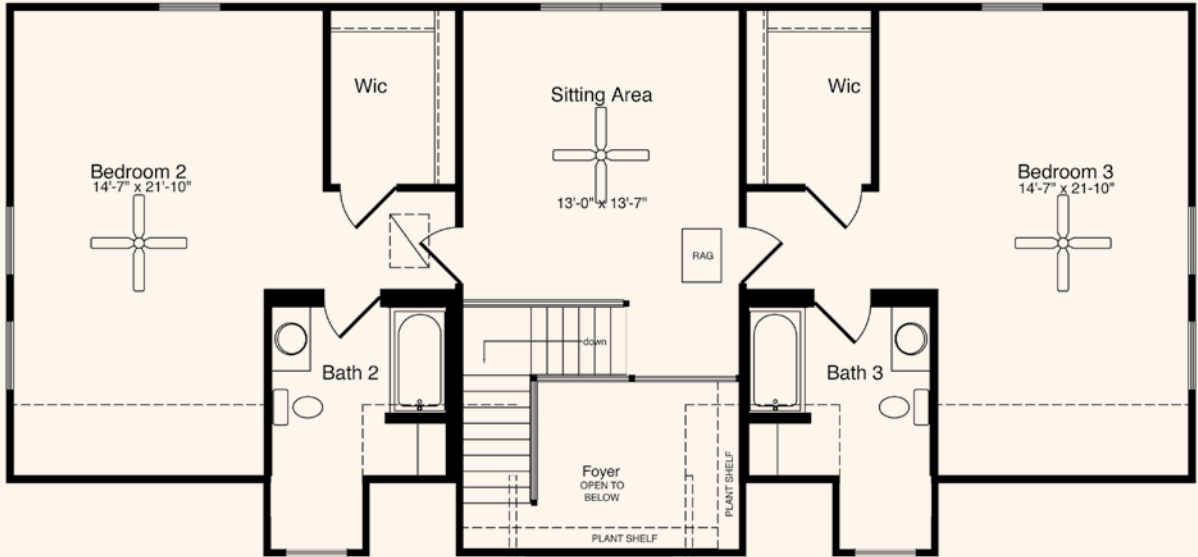
Cottage

Cape Cod

Traditional

Vacation

Estate



All home elevations are artist renderings and may vary from actual construction. All floor plans and room sizes are approximate. All information contained is the sole property of HandCrafted Homes.

The Mayberry

HandCrafted Homes

101 Eastern Minerals Rd., Henderson, NC 27537 • 877-424-4321 • 252-436-0001 • HandCraftedHomes.com