

Ranch

Cottage

Cape Cod

**Traditional**

Vacation

Estate

## The Salisbury



4 Bedrooms, 3.5 Baths  
2,136 1st Floor, 1,156 2nd Floor,  
3,292 Living Area  
49'10" x 55'6" Dimensions



The magnificence of this home can be appreciated immediately upon entering the two-story foyer. The first floor is highlighted by the dining room with optional tray ceiling, study, family room, living room and kitchen/nook combo. The master suite, also on the first floor, offers his and her walk-in closets and an optional walk-out bay window while the second floor provides three additional bedrooms and two additional baths.

\*Top elevation shown with optional sidelites and transom at front door, optional bay window with metal roof and bump-out, on-site constructed porch and stone. Lower elevation shown with optional bay window, picture window with circle top above in living room, on-site constructed porch.

**HandCrafted Homes**

101 Eastern Minerals Rd., Henderson, NC 27537 • 877-424-4321 • 252-436-0001 • HandCraftedHomes.com

Ranch

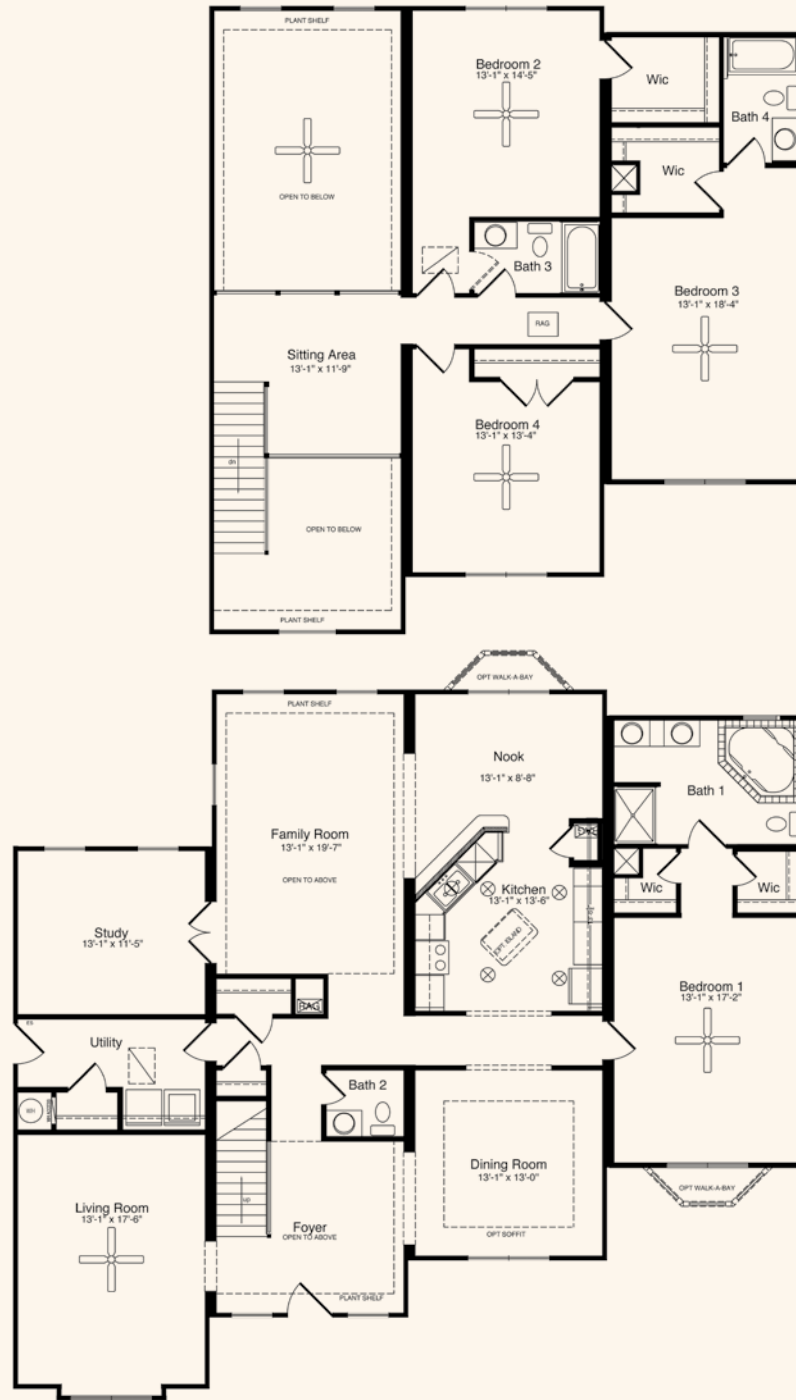
Cottage

Cape Cod

**Traditional**

Vacation

Estate



All home elevations are artist renderings and may vary from actual construction. All floor plans and room sizes are approximate. All information contained is the sole property of HandCrafted Homes.

# The Salisbury

**HandCrafted Homes**

101 Eastern Minerals Rd., Henderson, NC 27537 • 877-424-4321 • 252-436-0001 • HandCraftedHomes.com