

The Chapel Hill



3 Bedrooms, 2.5 Baths
1,839 Living Area
40' x 59'10" Dimensions

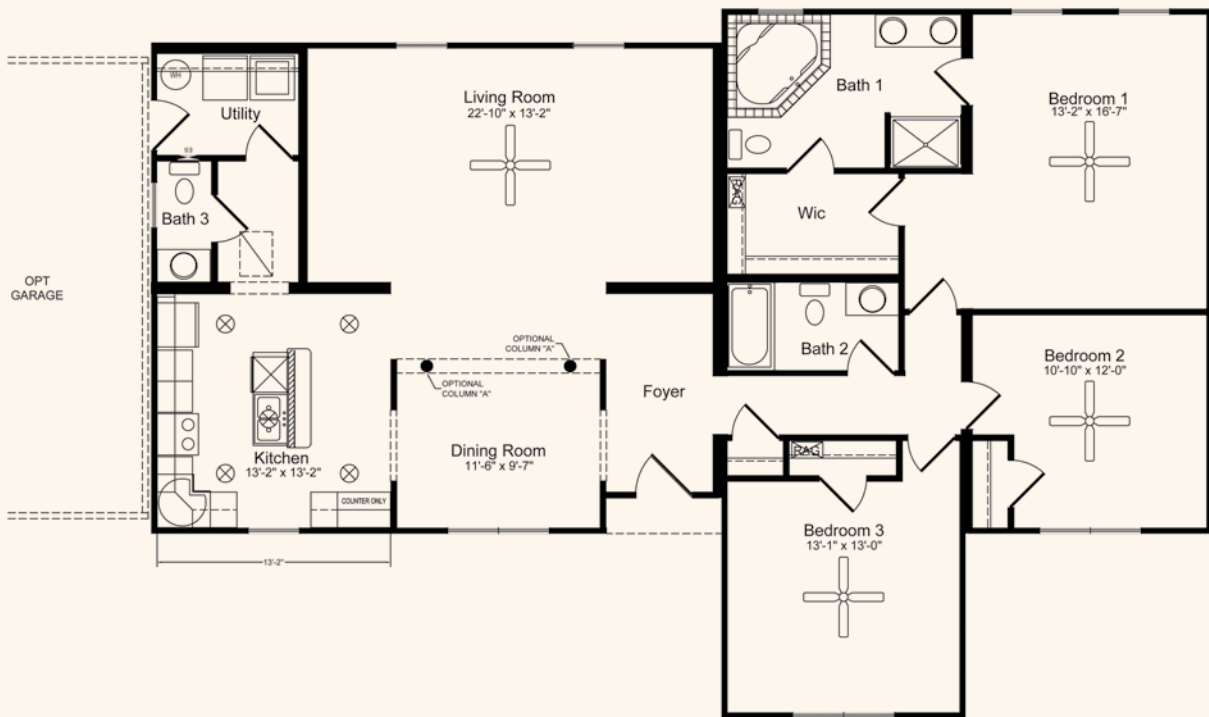


This single-story design places three bedrooms and two full baths at one side of the home with the living and dining areas on the other. An additional half bath allows for convenience to the homeowners and guests alike. The magnificent living room is conveniently located at the heart of the home.

*Optional 4' dormers with shake siding, board and batten siding in gable end, windows shown with no grids in the bottom sash, optional 12/12 roof pitch on top elevation. Optional 6' dormers with half round windows, optional 12/12 roof pitch on lower elevation.

HandCrafted Homes

101 Eastern Minerals Rd., Henderson, NC 27537 • 877-424-4321 • 252-436-0001 • HandCraftedHomes.com



All home elevations are artist renderings and may vary from actual construction. All floor plans and room sizes are approximate. All information contained is the sole property of HandCrafted Homes.

The Chapel Hill

HandCrafted Homes

101 Eastern Minerals Rd., Henderson, NC 27537 • 877-424-4321 • 252-436-0001 • HandCraftedHomes.com