

Ranch

Cottage

Cape Cod

Traditional

Vacation

Estate

The Mayfield



3 Bedrooms, 3.5 Baths
1,494 1st Floor, 863 2nd Floor,
2,357 Living Area
27'8" x 54' Dimensions



This is a magnificent Cape design with an open foyer, large living room and spacious kitchen boasting an island. The formal dining room and master suite complete the first floor. Two bedrooms, a sitting room and two full baths highlight the suggested second floor. A magnificent columned front porch offers both elegance and welcoming warmth to The Mayfield's front elevation.

*Top elevation shown with 8' shed dormers ILO 4' standard dormers, 12' shed dormer in center, sidelites at front door, on-site constructed porch. Lower elevation shown with optional 8' center dormer with true radius window and shutters, sidelites at front door.

HandCrafted Homes

101 Eastern Minerals Rd., Henderson, NC 27537 • 877-424-4321 • 252-436-0001 • HandCraftedHomes.com

Ranch

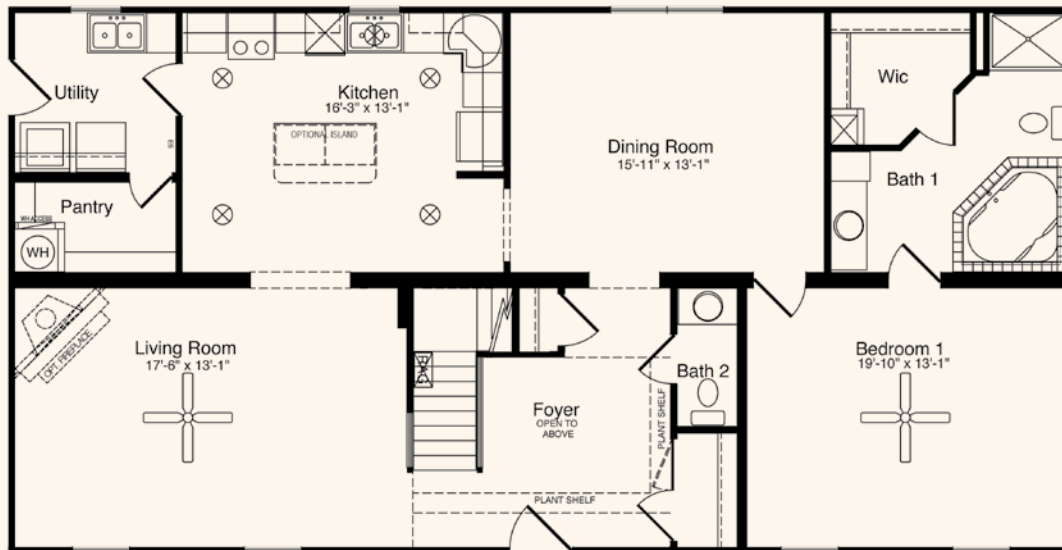
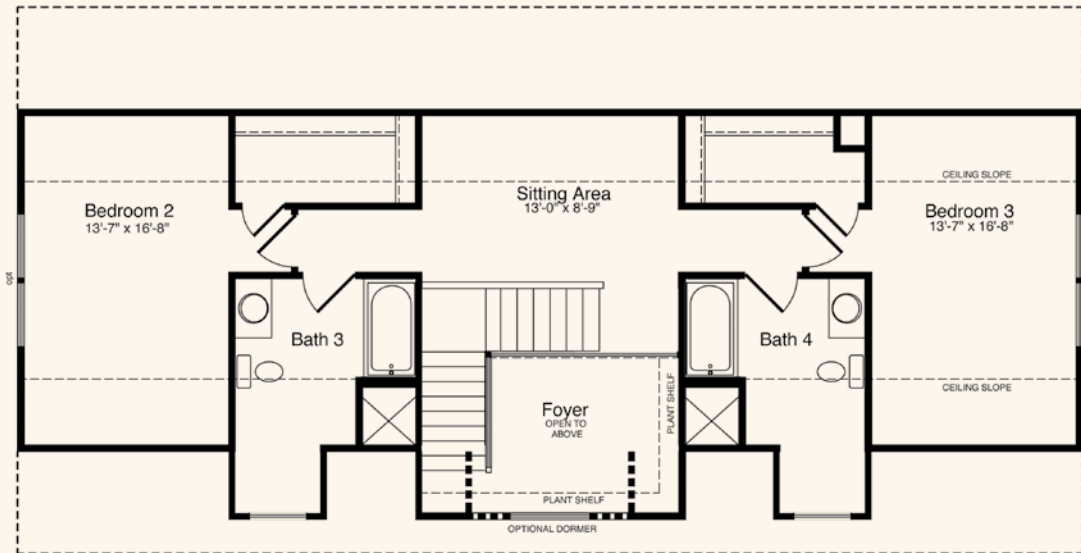
Cottage

Cape Cod

Traditional

Vacation

Estate



All home elevations are artist renderings and may vary from actual construction. All floor plans and room sizes are approximate. All information contained is the sole property of HandCrafted Homes.

The Mayfield

HandCrafted Homes

101 Eastern Minerals Rd., Henderson, NC 27537 • 877-424-4321 • 252-436-0001 • HandCraftedHomes.com