

Ranch

Cottage

**Cape Cod**

Traditional

Vacation

Estate

## The Rockford



3 Bedrooms, 2.5 Baths  
1,552 1st Floor, 802 2nd Floor,  
2,354 Living Area  
35'10" x 48' Dimensions



This lovely Cape-style home features a first floor master suite with a walk-in closet and private master bath. The kitchen/dining room combination, a spacious living room and a private den complete the first floor. The suggested second floor design offers two additional bedrooms and another full bath.

\*Top elevation shown with optional 6' dormers with circle top windows in place of 4' dormers with shake siding, sidelite at front door, on-site installed porch and brick. Lower elevation shown with on-site constructed porch.

**HandCrafted Homes**

101 Eastern Minerals Rd., Henderson, NC 27537 • 877-424-4321 • 252-436-0001 • [HandCraftedHomes.com](http://HandCraftedHomes.com)

Ranch

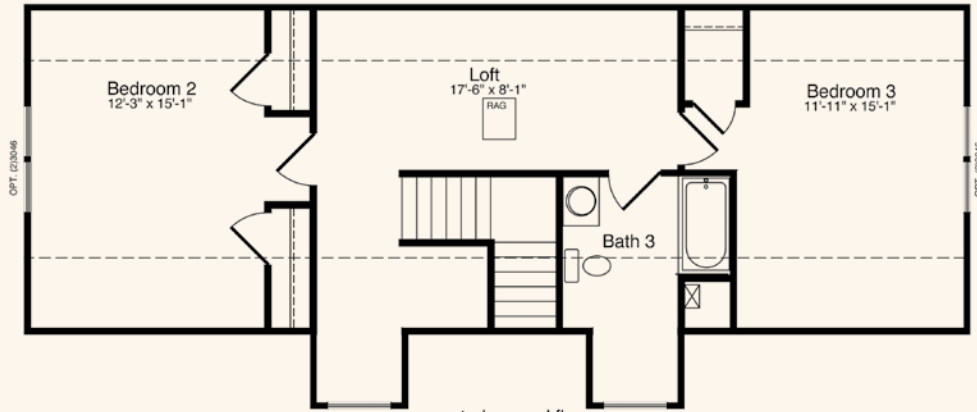
Cottage

Cape Cod

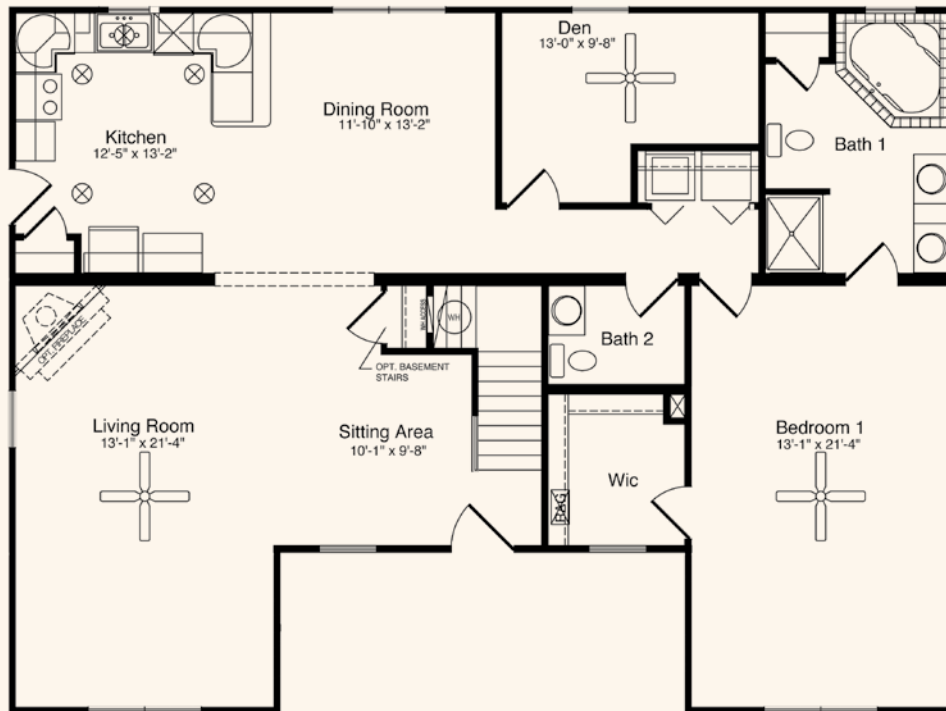
Traditional

Vacation

Estate



suggested second floor  
 FOR SECOND FLOOR LIVING AREA  
 ALL DESIGN, MATERIALS, AND WORK  
 TO BE THE RESPONSIBILITY OF THE  
 BUILDER ON SITE. INSULATION MUST  
 REMAIN R-30 IN THE ROOF AND  
 R-13 IN THE WALLS. LIGHT, VENT &  
 EGRESS IS THE RESPONSIBILITY  
 OF THE BUILDER ON SITE.



All home elevations are artist renderings and may vary from actual construction. All floor plans and room sizes are approximate. All information contained is the sole property of HandCrafted Homes.

# The Rockford

HandCrafted Homes

101 Eastern Minerals Rd., Henderson, NC 27537 • 877-424-4321 • 252-436-0001 • HandCraftedHomes.com