

Ranch

Cottage

Cape Cod

Traditional

Vacation

Estate

The Somerset



3 Bedrooms, 2.5 Baths
885 1st Floor, 543 2nd Floor,
1,428 Living Area
27'8" x 32' Dimensions

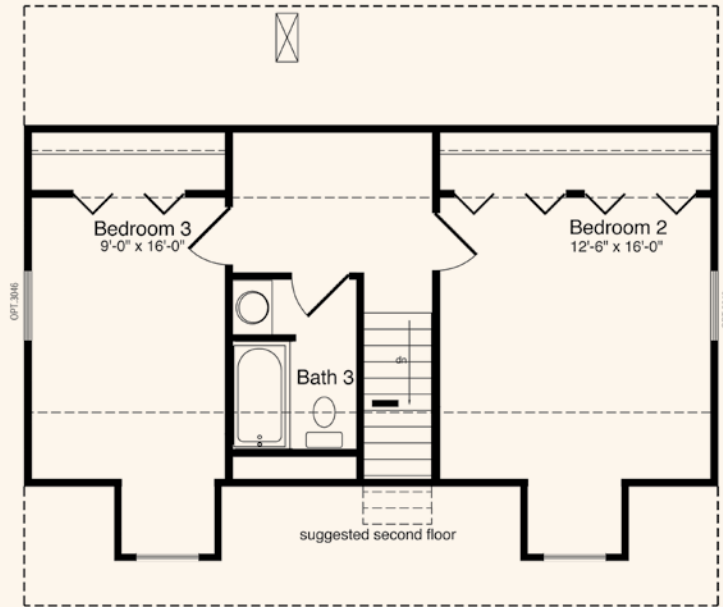


The kitchen/dining room combination will certainly be the family gathering spot in The Somerset. The first floor design also offers a living room, half bath and the master suite. The suggested second floor design provides the home's additional full bath and two bedrooms.

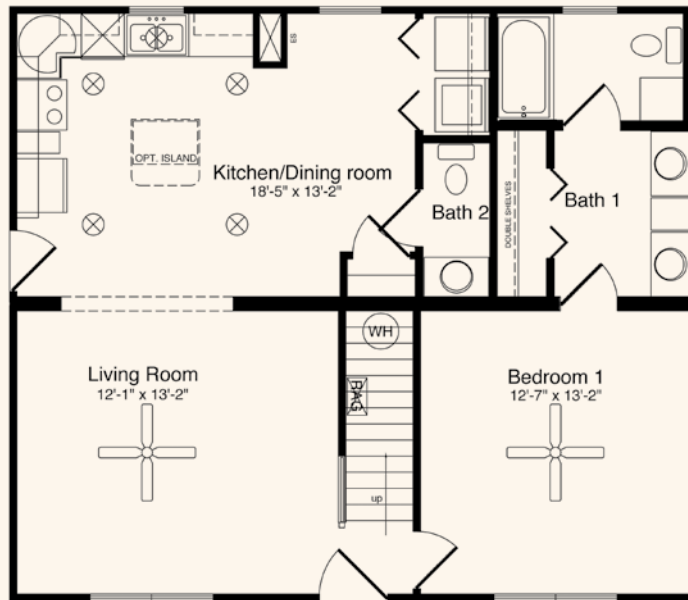
*Top elevation shown with windows with grids in top sash - no grids in bottom sash and porch built on-site. Lower elevation shown with on-site constructed porch and garage and optional gable end window on left side of home.

HandCrafted Homes

101 Eastern Minerals Rd., Henderson, NC 27537 • 877-424-4321 • 252-436-0001 • HandCraftedHomes.com



FOR SECOND FLOOR LIVING AREA
ALL DESIGN, MATERIALS, AND WORK
TO BE THE RESPONSIBILITY OF THE
BUILDER ON SITE. INSULATION MUST
REMAIN R-30 IN THE ROOF AND
R-13 IN THE WALLS. LIGHT, VENT &
EGRESS IS THE RESPONSIBILITY
OF THE BUILDER ON SITE.



All home elevations are artist renderings and may vary from actual construction. All floor plans and room sizes are approximate. All information contained is the sole property of HandCrafted Homes.

The Somerset

HandCrafted Homes

101 Eastern Minerals Rd., Henderson, NC 27537 • 877-424-4321 • 252-436-0001 • HandCraftedHomes.com